



A. 333-2405

8 Qt. Petite Marmite

B. 333-2406

2 Qt. Petite Marmite

Also Available

333-2407

4 Qt. Petite Marmite

(Not Pictured)

333-2411

6 Qt. Petite Marmite

(Not Pictured)



A. 444-6203

Banquet 7 - Compartment Hot & Cold
Bain Marie Six 3 Qt.
Inserts w/Covers One 4 Qt.
Insert w/Cover
Dims: 27" Dia. x 17" Ht.
Net Wt.: 60lbs.
Shipping Wt.: 100lbs

B. 444-6208

Banquet 6 - Compartment Cold Bain
Marie Six 2 Qt.
Inserts w/Covers
One 12"L x 6"W x 4" Deep Insert Pan
Dims: 25"L x 15"W x 8"Ht. Overall
Net Wt.: 50 lbs.
Shipping Wt.: 75 lbs.

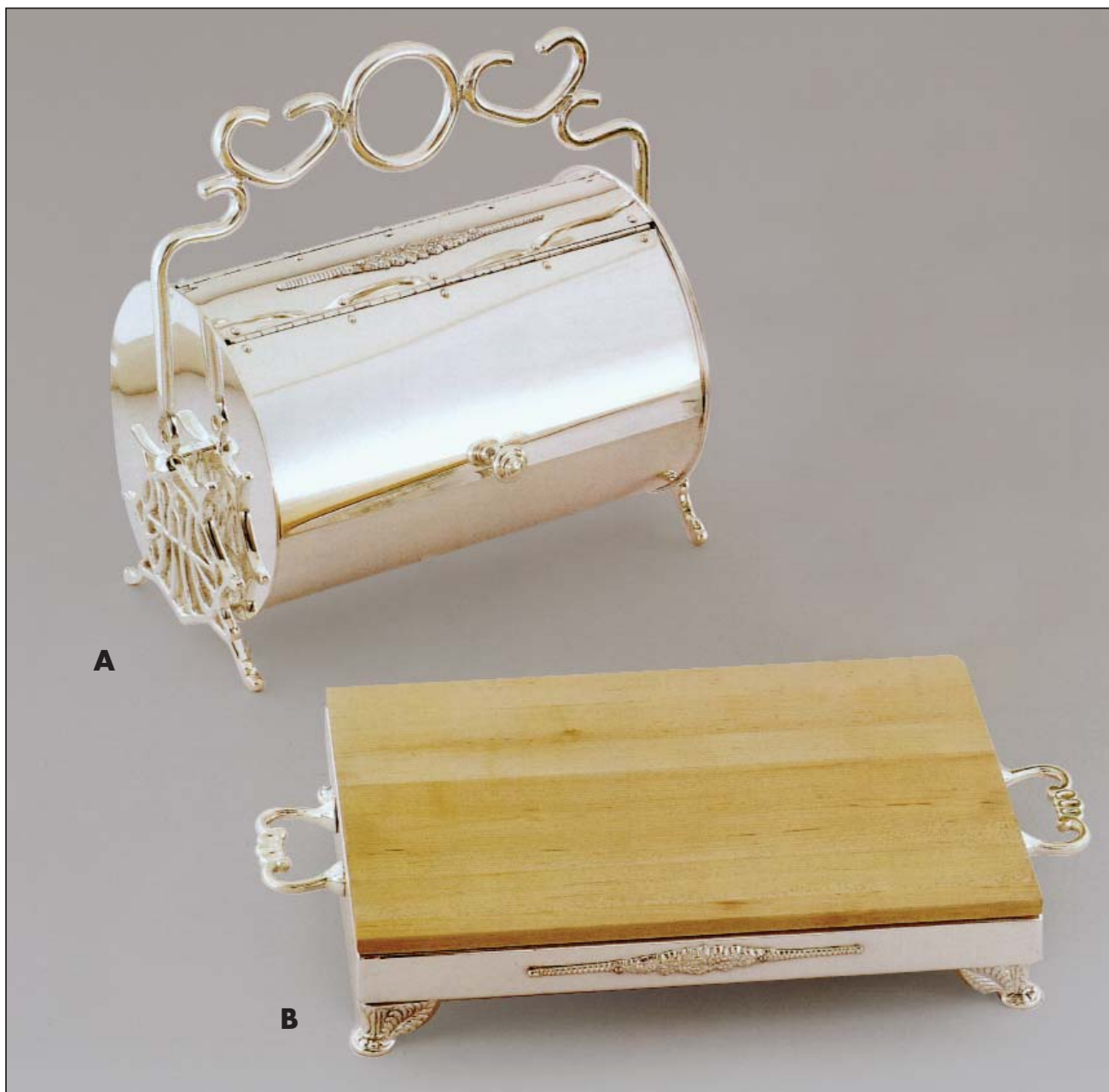
*Crating charge for this item.

*Crating charge for this item



A. 333-1580
Portable Heat Lamp

B. 333-1579
Portable Heat Lamp - Double



A. 333-3078

Buffet Bread Box Serves
from both sides
Dim: 10" Dia. x 14 1/4"
Long Overall: 16"L x 17"H
Shipping Wt: 30lbs.

B. 333-1052

Cutting Board
Dims: 18" x 12" x 3"
Shipping Wt: 10 lbs.



A. 333-2470D

Banquet Griddle - Double

Dims: 40" x 14" x 8"

Cooking Surface: (2) 19" x 11"

Shipping Wt: 70 lbs.

*Crating charge for this item

B. 333-2458

Electric Omelet Cooker

Dims: 20" x 12" x 8"

Cooking Surface: 19" x 11"

120/220V Available

Shipping Wt: 30 lbs.



A. 333-2459

12" x 24" Oblong Plate Warmer

Dims: 20" x 12" x 8"

Shipping Wt: 25 lbs.



A. 222-2537

Art Deco Rechaud
10" Dia. x 7"H

B. 444-2831

3 in 1 Rechaud, Chafing
Dish & Steamer
12" Dia. x 8"H

C. 444-2203

Alcohol Chimney Rechaud
12" Dia. x 7"H

D. 444-2204

Oval Alcohol Chimney
Rechaud 16"L x 10"W x 8"H

A. 333-1539

128 Oz. Soup Tureen w/Cover
10½" Dia. 6½" Ht.

B. 333-1538

120 Oz. Soup Tureen w/Cover
8½" Dia. x 6" Ht.

C. 333-1545

64 Oz. Soup Tureen
6" Dia. x 6"Ht.

D. 333-1537

96 Oz. Soup Tureen w/Cover
8" Dia. x 6" Ht.

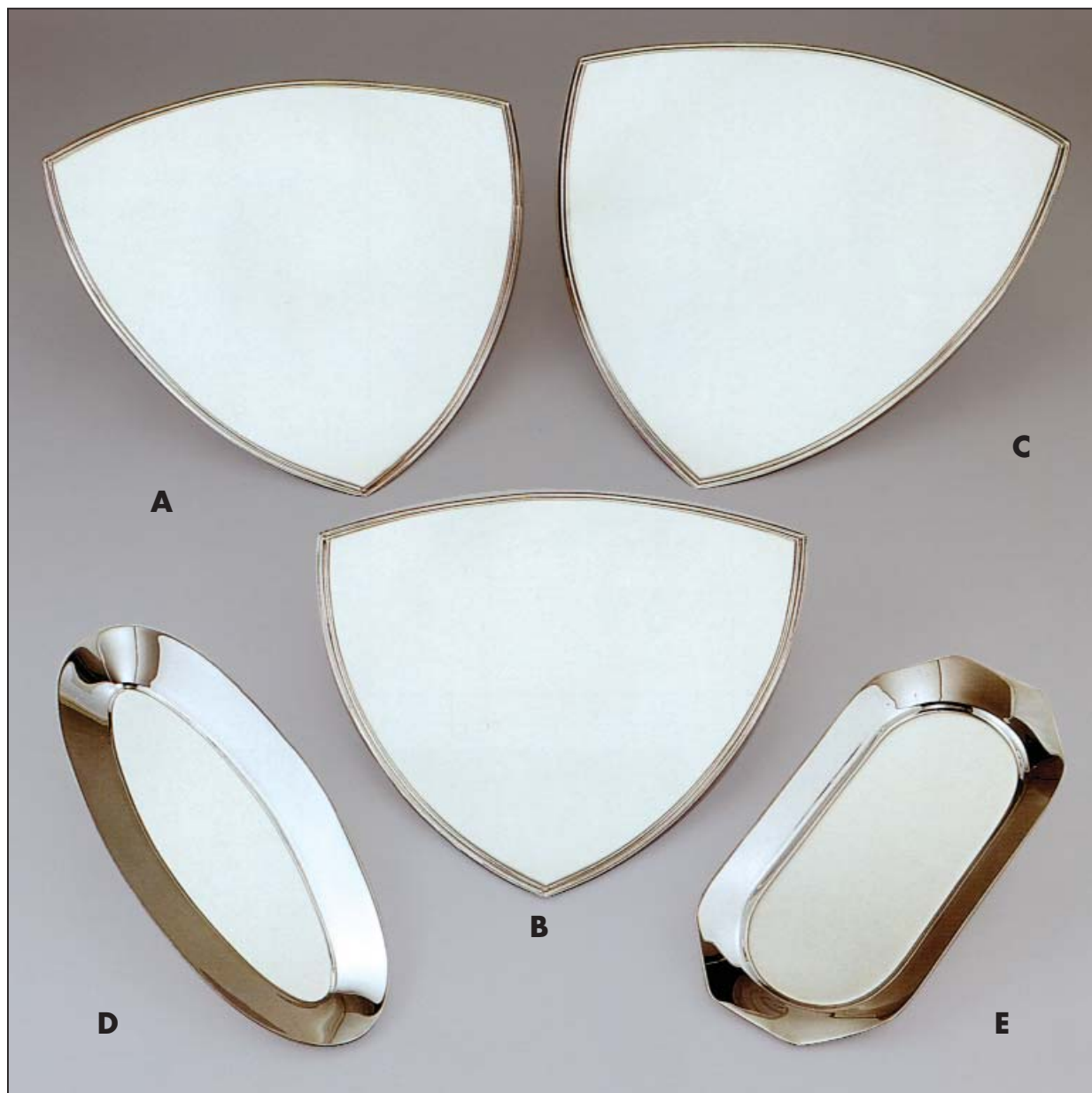
E. 333-1408

16 Oz. Soup Bowl w/Cover
& Lion Head Handles

F. 333-1407

24 Oz. Soup Bowl w/Cover
& Shell Handles





A. 222-1440
20" x 20" x 20"
Triangle Serving Platter

B. 222-1441
22" x 22" x 22"
Triangle Serving Platter

C. 222-1442
24" x 24" x 24"
Triangle Serving Platter

D. 222-1444
20" x 8"
Oval Fish Platter

E. 222-1443
17" x 9"
Prism Platter



A. 222-1451
14" Dia. Display Bowl

B. 222-1452
15" Dia. Display Bowl

C. 222-1450
12" Dia. Display Bowl

D. 222-1454
25" x 18" Coupe Platter
222-1455
18" x 16" Coupe Platter

E. 222-1456
21" x 15" Oval Platter
222-1457
17" x 12" Oval Platter
222-1458
23" x 16" Oval Platter
222-1459
25" x 18" Oval Platter

F. 222-1460
17" x 12" Tapered
Oval Serving Tray



A. 333-1220ED
Oyster Plate Extra Deep.

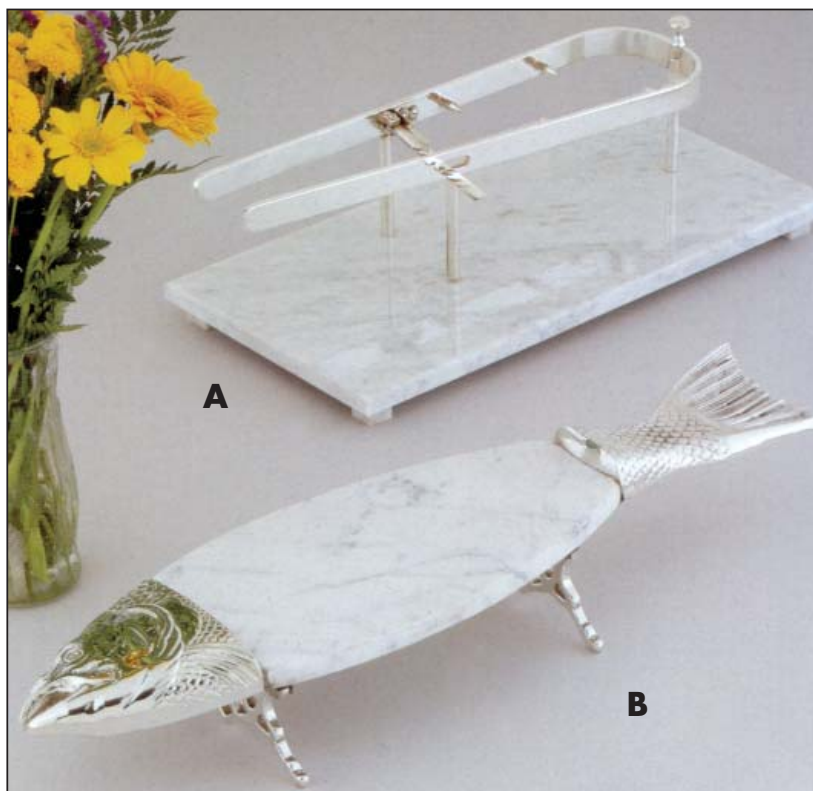
B. 333-1217
Seafood Platter w/Drip Pan.

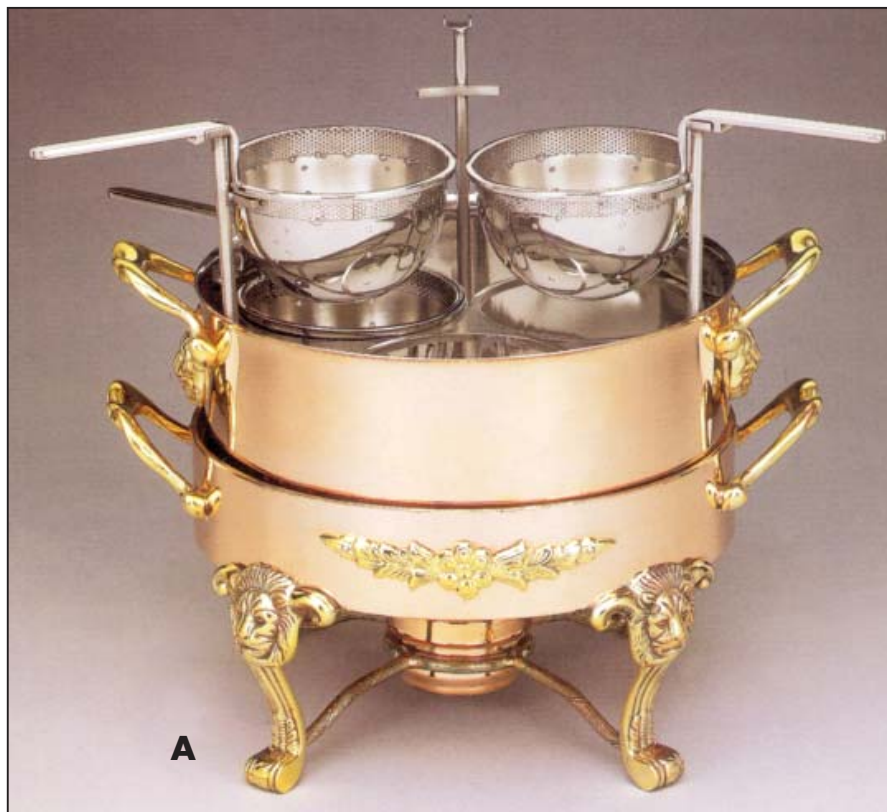
C. 333-1216
Oyster Set-Up.

D. 333-1220-2L
12" Oyster Plate w/Lines.

A. 333-1044
Proscuitto Holder
w/Marble Base
Dims: 20" x 12" x 3/4"
Overall: 24" x 12" x 6"
Net Wt: 30 lbs.
Shipping Wt: 42 lbs.

B. 333-2790
Marble Fish Platter
w/Stand
Dims: 31 "x 8" x 4" O.A.
Marble: 15" x 8".





A

A. 444-2852

Pasta Station w/3 each
Stainless Steel Baskets
Dims: 19" Dia. x 19"H
Net Wt.: 44 lbs.
Shipping Wt.: 50 lbs.



B

B. 444-2856

3 Compartment Bain Marie
2 Quart Capacity Each
Dims: 26" x 8" x 20"
Net Wt.: 32 lbs.
Shipping Wt.: 40 lbs.
Also available 444-2854
Compartment Bain Marie
(Not Pictured) .



C

C. 444-2857

2 Compartment Bain Marie
2 Quart Capacity
Dims: 18" x 8" x 20"
Net Wt.: 25 lbs.
Shipping Wt.: 32 lbs..



D

D. 444-2853

4 Compartment
Condiment Holder
Dims: 24" x 6" x 6"
Net Wt.: 12 lbs.
Shipping Wt.: 15 lbs.



A. 777-1016

Topping Display Unit
Dims: 26 ¼" x 5 ½" x 20 ½"

B. 444-1017

Insulated Ice Cream Carrier
Dims: 33" x 12" x 12"
Overall: Ht. 18 ½"
Three 6 Qt Insulated Containers Three
Insulated Covers

*Crating charge for this item



222-1582
Heat Lamp



222-1212SQ
2 Pan Grill Station
w/Square Legs



222-2403SQ
1 qt. Petite Marmite
w/Square Legs



222-2526SPL
Stove Cover Up

222-1315
8" Sauce Pan



- A. 444-2348 6 pt.**
Lobster Leg Chafing Dish
- B. 444-1086 12"**
Crepe Suzette Pan
- C. 444-2536**
Alcohol Rechaud Lamp
- D. 444-1050**
Single Bottle Wine Cooler

- E. 444-1051**
Magnum Cooler
- F. 444-1150H 32 oz.**
Casserole with Cover
- G. 444-1323BH 4 qt.**
Brazier with Cover
- H. 444-1437**
Zabalogue Pan

- I. 444-1200H**
6 Hole Snail Plate
- J. 444-1200LH**
6 Hole Snail Plate
Long Handle
- K. 444-1103BH**
10" Oval Fry Pan



A. 444-1302BH 4 qt.
Sauce Pan

B. 444-1088
Cafe Diable

C. 444-1144H 2 1/2 qt.
Round Casserole with
Cover

D. 444-2543BH 2 qt.
Tapered Sauce Pan

E. 444-2375
Fettucine Pan

F. 444-1345BH 10"
Round Fry Pan

G. 444-1113H 10"
Oval Au Gratin

H. 444-1121H 12 oz.
Round Au Gratin

I. 444-2387H 10"
Oval Gratin Platter